

REVER WALL 1.0

01-Aug.-2017

REVER WALL 1.0

LED C35 or P25 max. 6W | E14 | 220-240VAC | 50-60Hz | Dimmable
| Plating steel (C/G/N/P/W/B) | Polycarbonate (TG/SG/CW/AY/HR)

CE IP20

DIFFUSER COLOUR

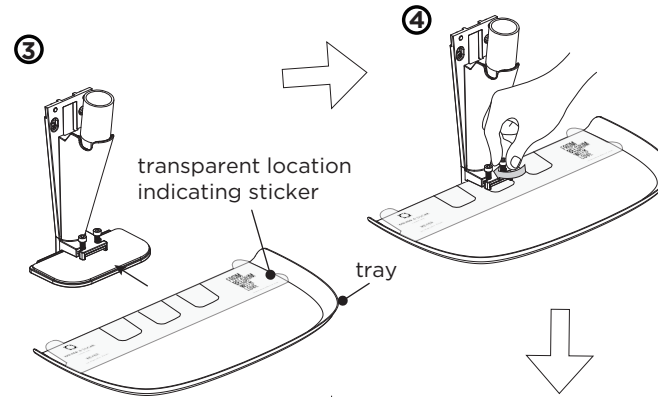
tea green
smoke grey
champ. white
amber yellow
hip rose

6511CTG_
6511CSG_
6511CCW_
6511CAY_
6511CHR_

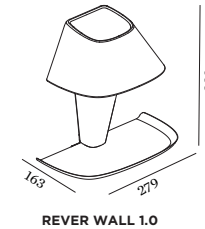
TRAY COLOUR

CHROME
BLACK CHROME
LIGHT GOLD
PINK COPPER
WHITE
BLACK

C
N
G
P
W
B

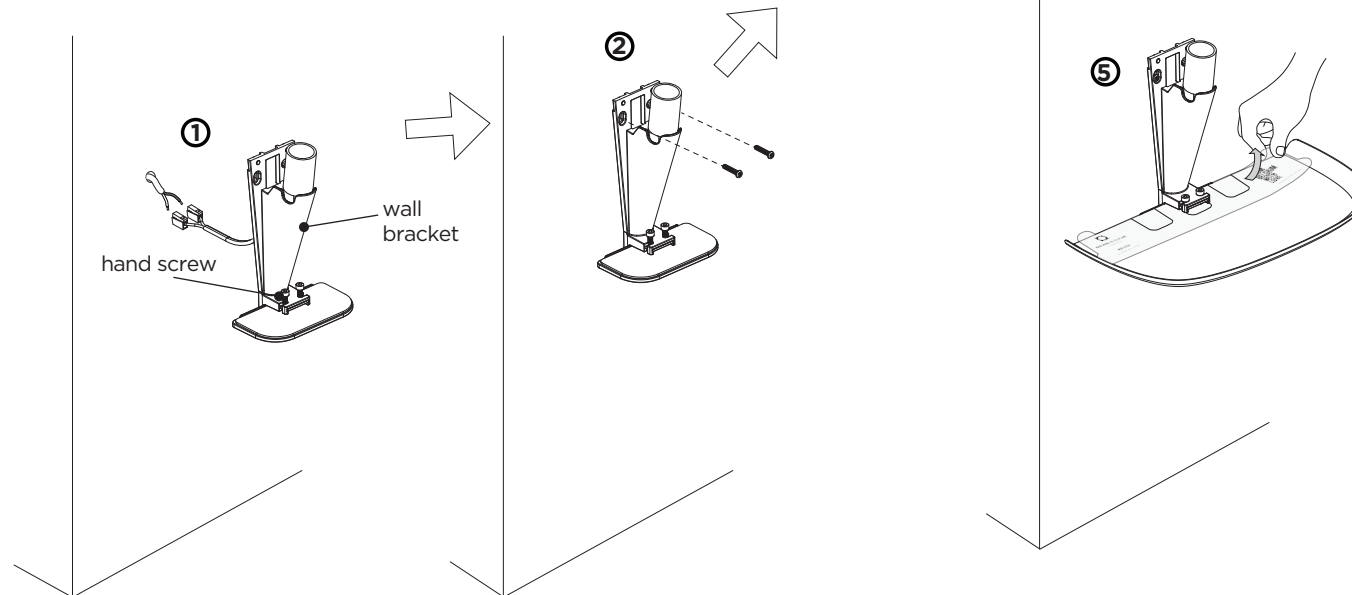


DIMENSIONS



MOUNTING INSTRUCTION

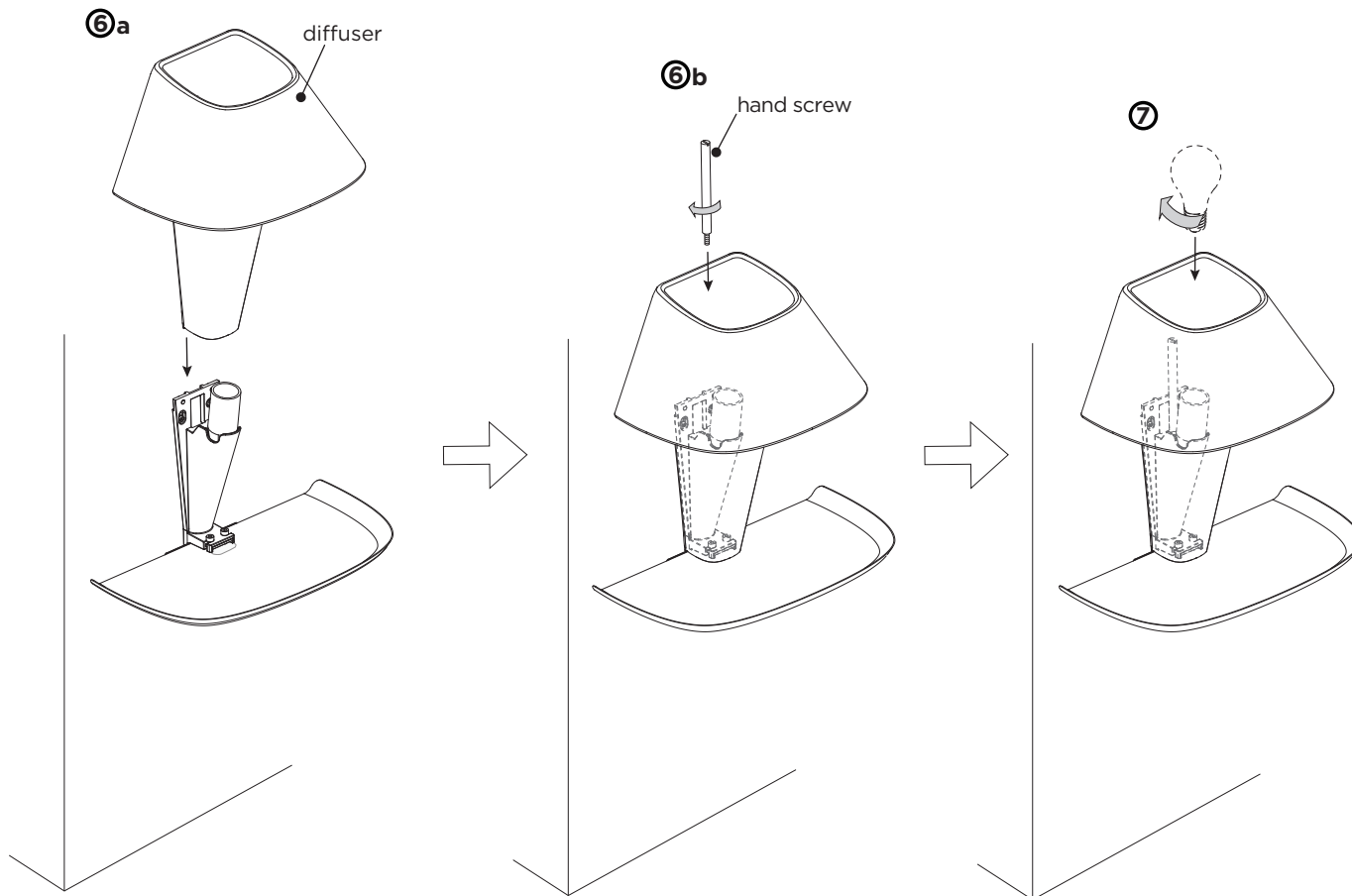
- 1 Connect the wires on a wall.
- 2 Mount the bracket on the wall with two screws.
- 3 Insert the tray to the wall bracket, and select the right position.
- 4 Tighten the two screws by hand.
- 5 Remove the transparent location indicating sticker.



see the follow steps on page 2

REVER WALL 1.0

01-Aug.-2017



- ⑥ Mount the diffuser.
 - a Use a diffuser to cover the bracket.
 - b Then fix the diffuser onto the bracket with the hand screw.
- ⑦ Fix a bulb into the diffuser, bulb is not included.
Applies only to **LEADING EDGE LED DIMMABLE BULB**.