

# THEMIS

26-Oct.-2019

## 1.7

**LED** 4/5W | 500-700mA | 6Vf | PCB 3-step | excl. power supply

CE IP20 0,3m 16

white texture	323271W_
white + silver	323271X_
silver	323271S_
black texture + gold	323271K_

### OPTIONAL

plaster kit	90017111
recessed housing (always use in combination with plaster kit)	90012032

## 2.7

**LED** 4/5W | 500-700mA | 6Vf | PCB 3-step | excl. power supply

CE IP20 0,3m 16

white texture	323371W_
white + silver	323371X_
silver	323371S_
black texture + gold	323371K_

### OPTIONAL

plaster kit	90017112
recessed housing (always use in combination with plaster kit)	90012033

## 5.0

**LED** 4/5W | 500-700mA | 6Vf | PCB 3-step | excl. power supply

CE IP20 0,3m 16

white texture	323671W_
white + silver	323671X_
silver	323671S_

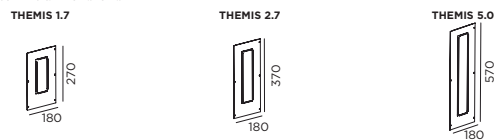
### OPTIONAL

plaster kit	90017115
recessed housing (always use in combination with plaster kit)	90012036

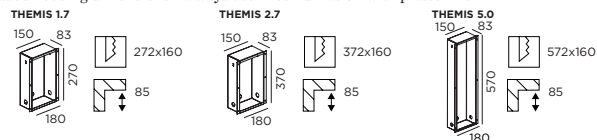
### LIGHT COLOUR

2700K   >80CRI   230-320lm	2
3000K   >80CRI   260-350lm	4

### plaster kit dimensions



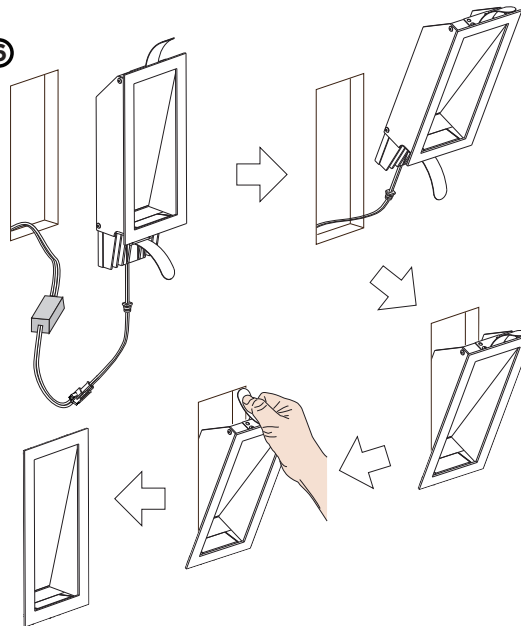
### recessed housing dimensions - always use in combination with plaster kit



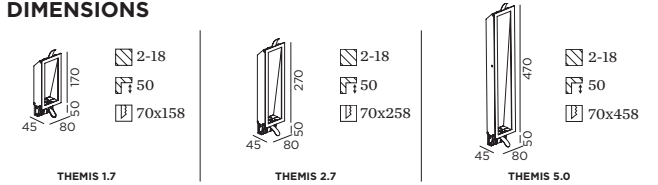
①\*



⑥



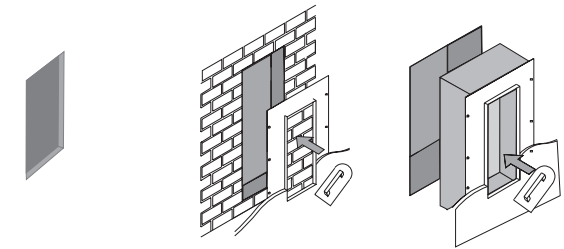
## DIMENSIONS



## MOUNTING INSTRUCTION

- ① Make a hole in the wall according to the prescribed dimensions.  
Optional: plaster kit / recessed housing

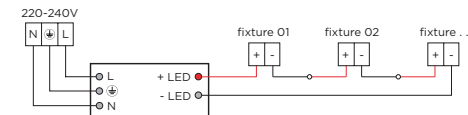
\*When using a plaster kit please consult page 2 for more detailed mounting instructions.



## POWER CONNECTION

- ⑤ SERIAL CONNECTION - for LED

Always use a power supply according to the specifications of the LED module.



WEVER & DUCRÉ  
LIGHTING

www.weverducre.com

Wever & Ducre bvba Spinnerijstraat 99/21 8500 Kortrijk

INSTALLATION  
INSTRUCTIONS

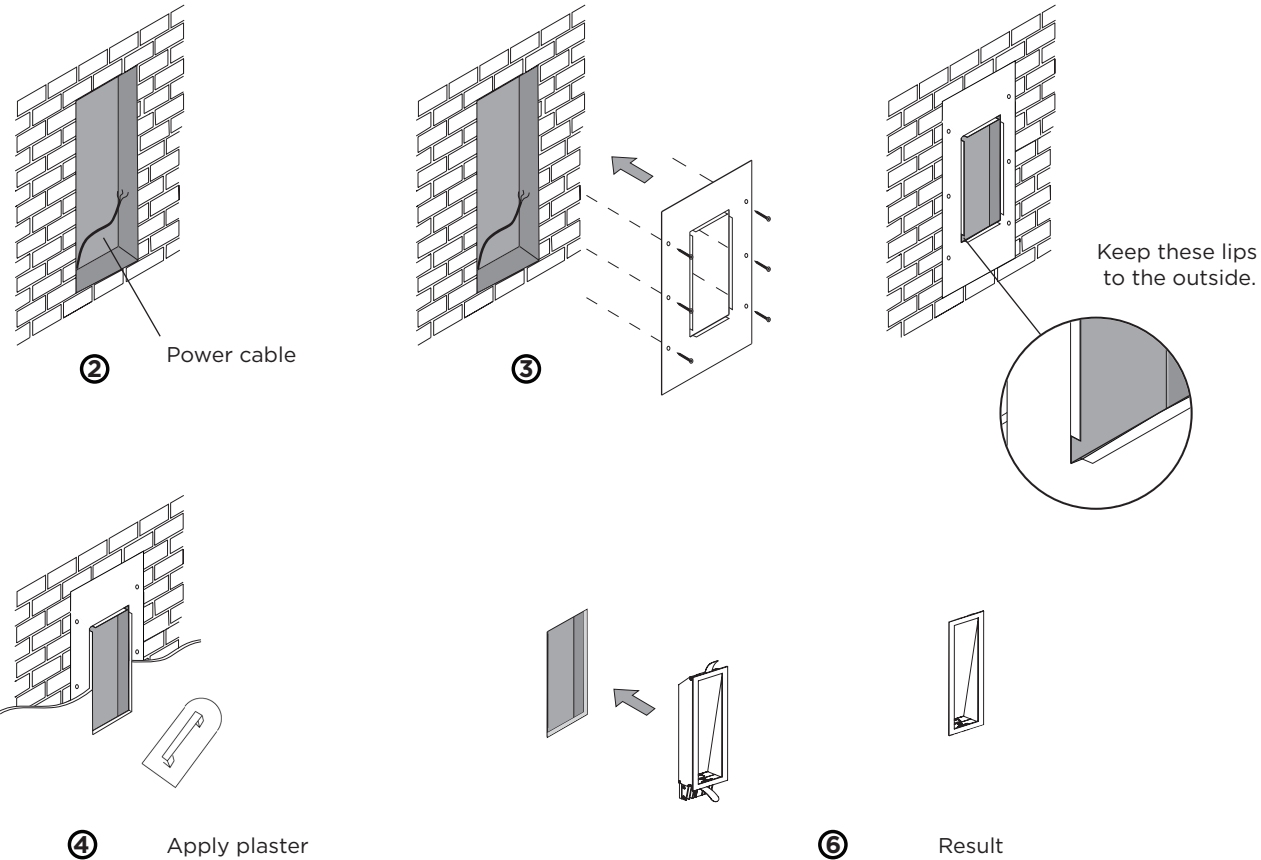
PAGE 1/2

# THEMIS

DETAILED MOUNTING INSTRUCTION

26-Oct.-2019

## DETAILED MOUNTING INSTRUCTION (when using plaster kit):



- ② Make sure the power cable is easy accessible.
- ③ Fix the plaster kit against the wall with screws.
- ④ Apply plaster to the wall and plaster kit.
- ⑥ Insert the Themis fixture into the wall or plaster kit / recessed housing.

