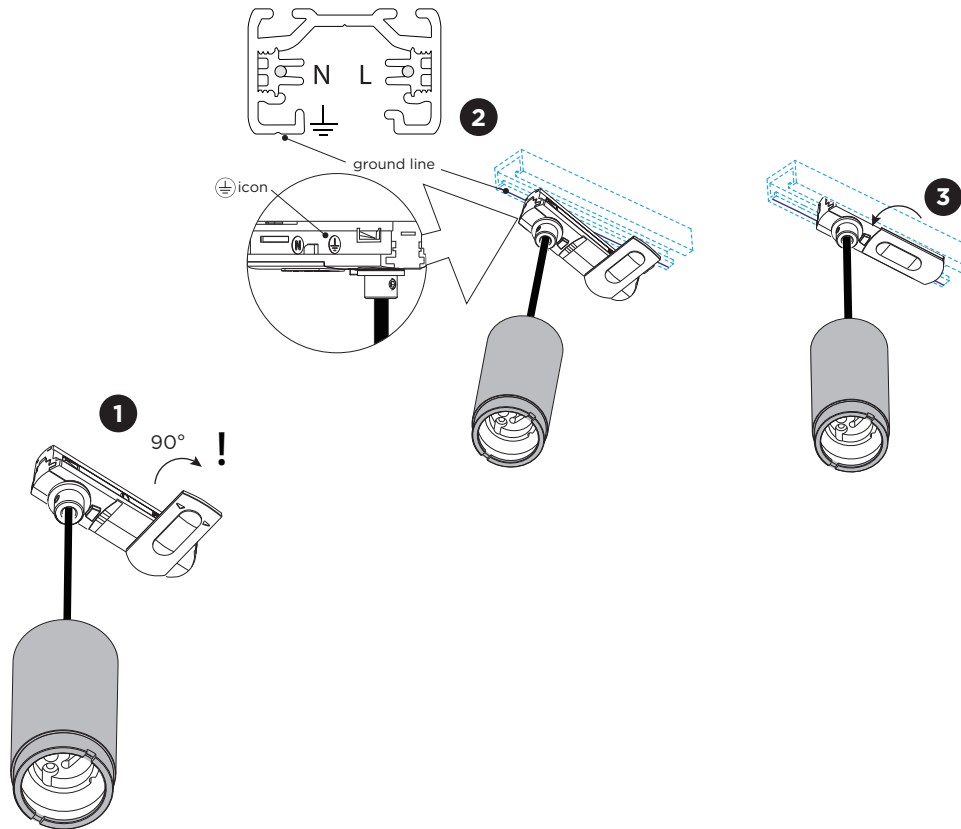


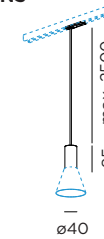
# ODREY on track (1-phase)

INSTALLATION INSTRUCTIONS | JUNE 2020

install the adapter into track




## DIMENSIONS



ODREY SUSPENDED 1.0

## MOUNTING INSTRUCTION

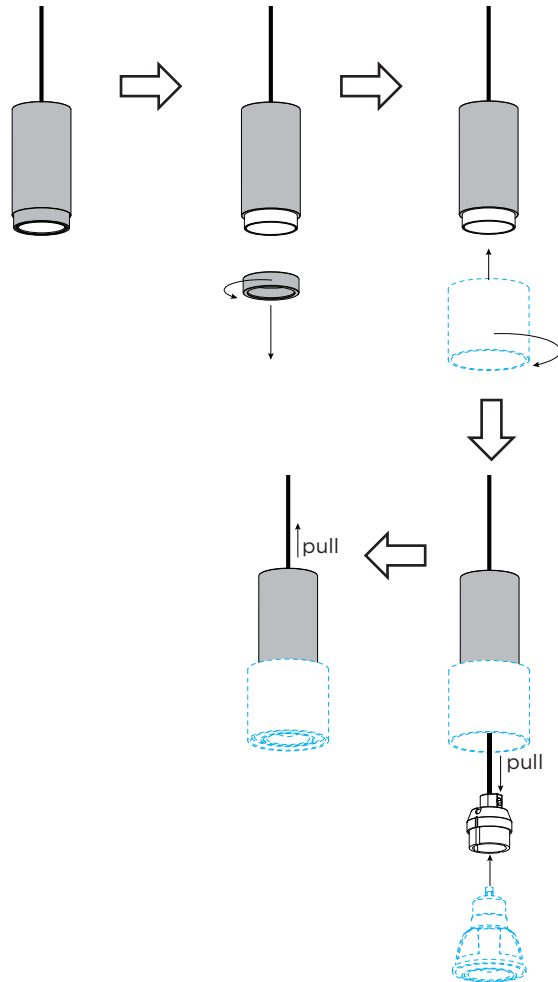
- 1 Turn the adapter's handle 90° as illustrated.
- 2 Push the fixture into the track. Make sure the  icon on the inside of the adapter is faced towards the track side with the **ground line** carved in it.
- 3 Turn the handle back into the original position.

for installation with shade 1.0, please find the details on page 2

# ODREY on track (1-phase)

INSTALLATION INSTRUCTIONS | JUNE 2020

installation with shade 1.0

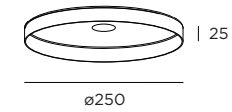


## SHADES

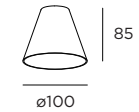
shade 1.0



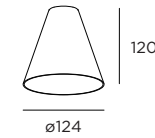
shade 2.0



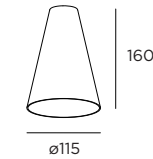
shade 3.0



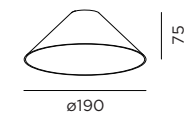
shade 4.0



shade 5.0



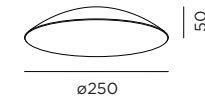
shade 6.0



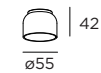
shade 7.0



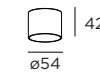
shade 8.0



inner cover 1.0



inner cover 2.0

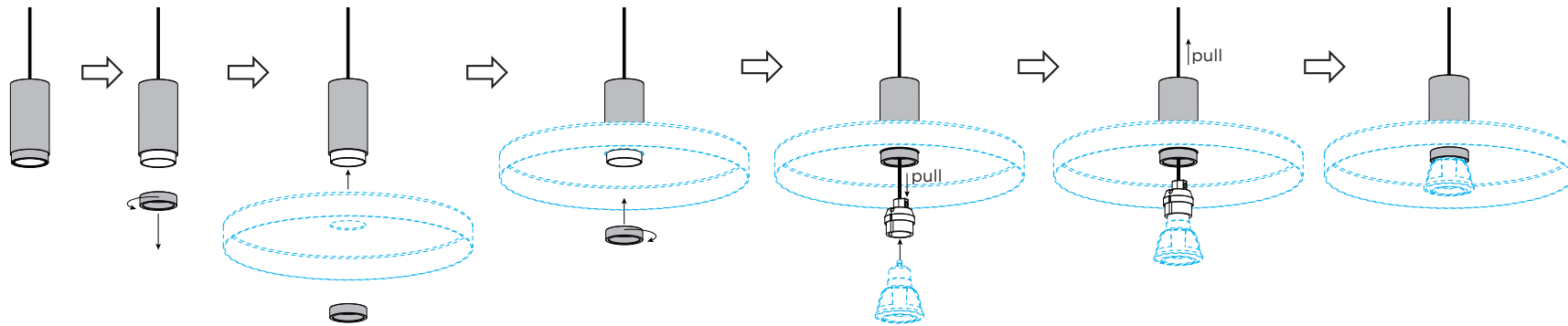


for installation with Shade 2.0 & 3.0-8.0, please find the details on page 3

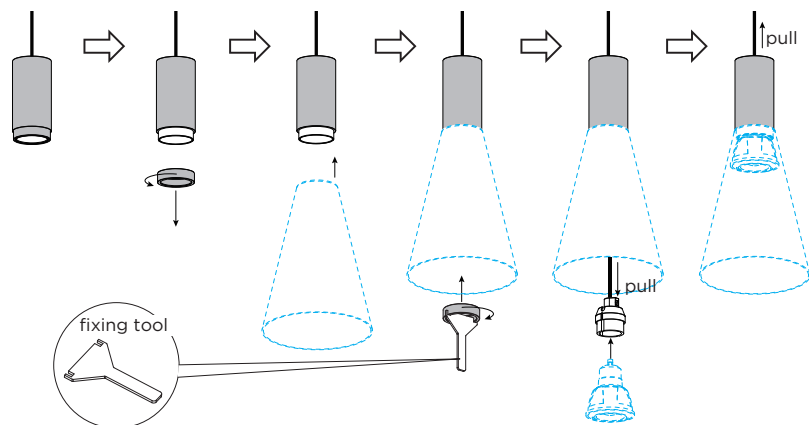
# ODREY on track (1-phase)

INSTALLATION INSTRUCTIONS | JUNE 2020

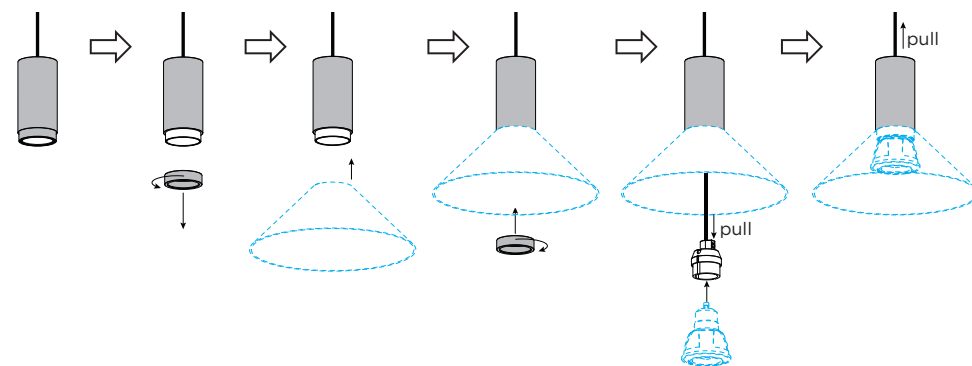
installation with shade 2.0



installation with shade 3.0 / 4.0 / 5.0 (always using the fixing tool)



installation with shade 6.0 / 7.0 / 8.0



for installation with shade + inner cover, please find the details on page 4

# ODREY on track (1-phase)

INSTALLATION INSTRUCTIONS | JUNE 2020

installation with shade + inner cover

