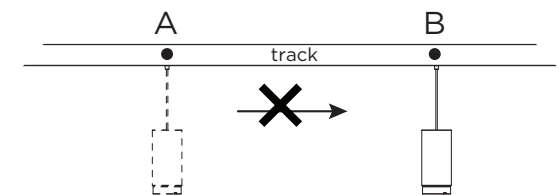
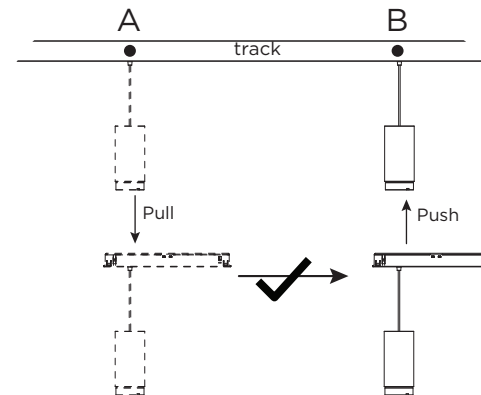
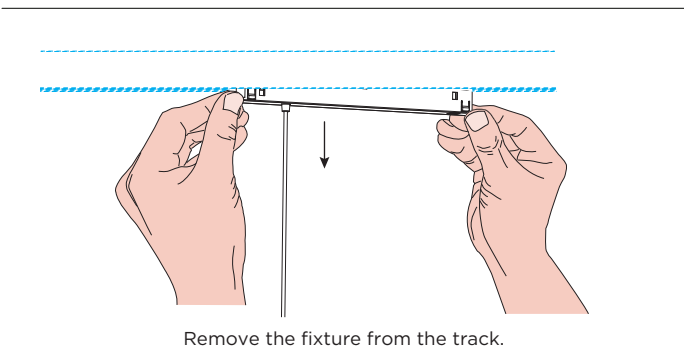
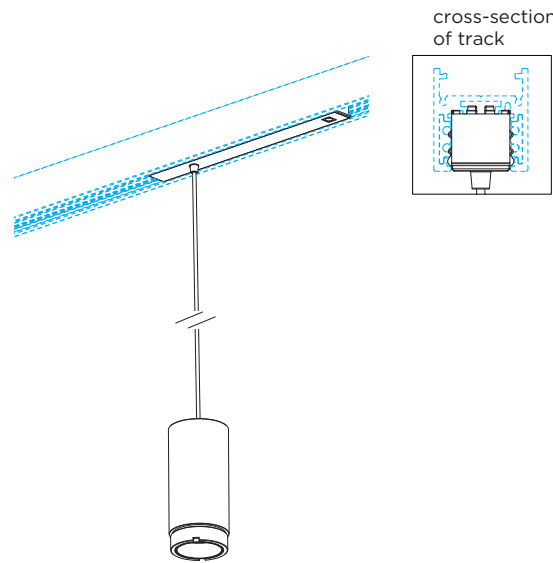
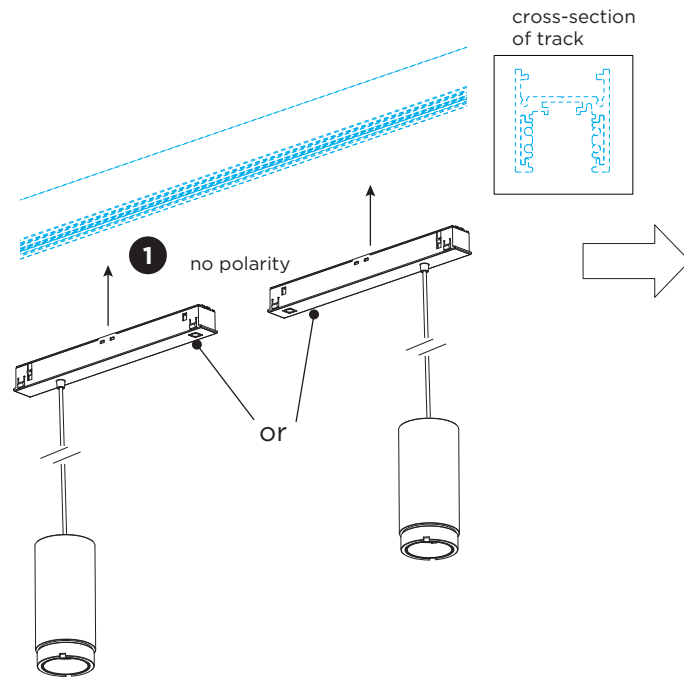


ODREY on track (48V)

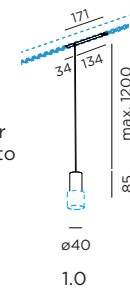
INSTALLATION INSTRUCTIONS | AUGUST 2020



for installation with shade 1.0, please find the details on page 2

DIMENSIONS

Please contact Wever & Ducré for solutions on how to shorten the cable length.



MOUNTING INSTRUCTION

- 1 Push the fixture into the track at the preferred location.

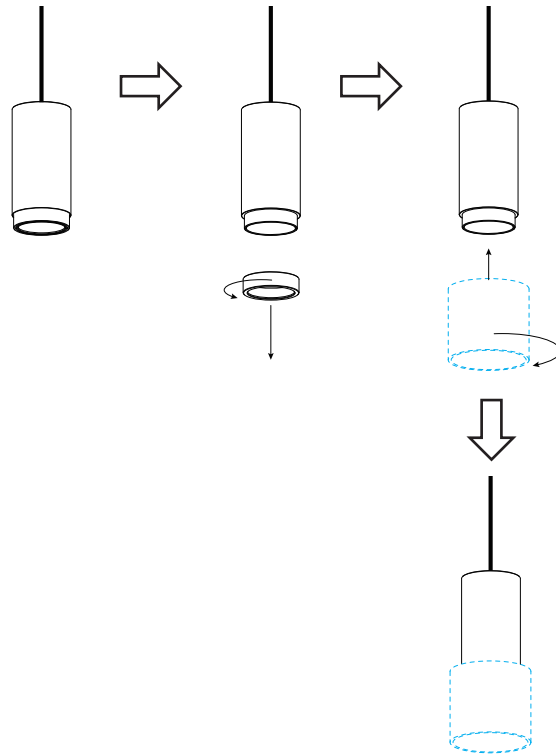


Note: the fixture is not allowed to slide in the track. If you want to change location of the fixture in the track, please pull the fixture out of the track and install it on the correct position.

ODREY on track (48V)

INSTALLATION INSTRUCTIONS | AUGUST 2020

installation with shade 1.0

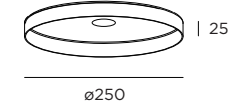


SHADES

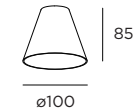
shade 1.0



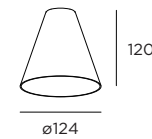
shade 2.0



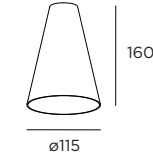
shade 3.0



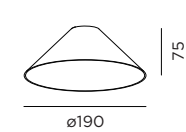
shade 4.0



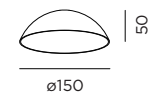
shade 5.0



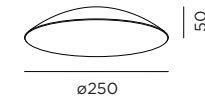
shade 6.0



shade 7.0



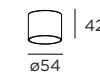
shade 8.0



inner cover 1.0



inner cover 2.0

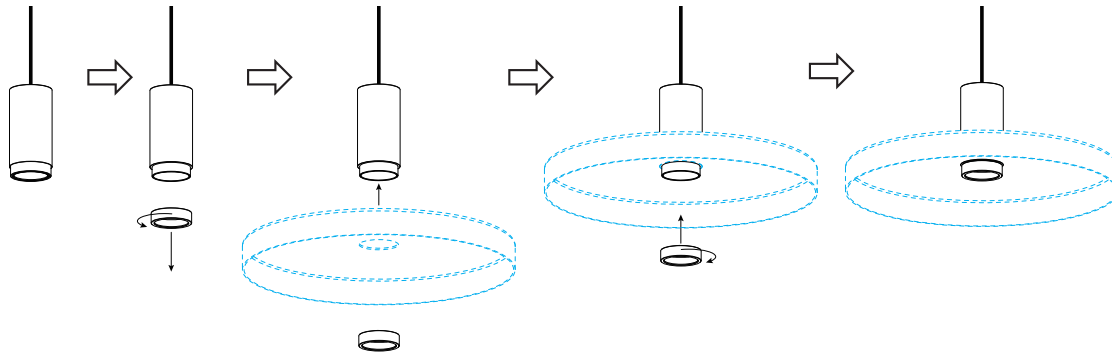


for installation with Shade 2.0 & 3.0-8.0 & shade + inner cover, please find the details on page 3

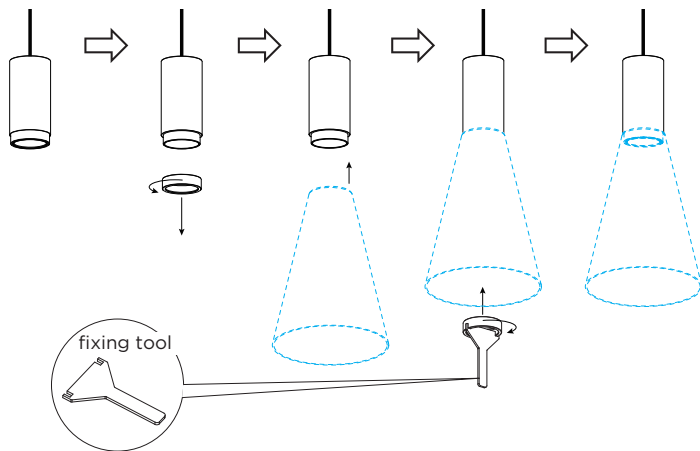
ODREY on track (48V)

INSTALLATION INSTRUCTIONS | AUGUST 2020

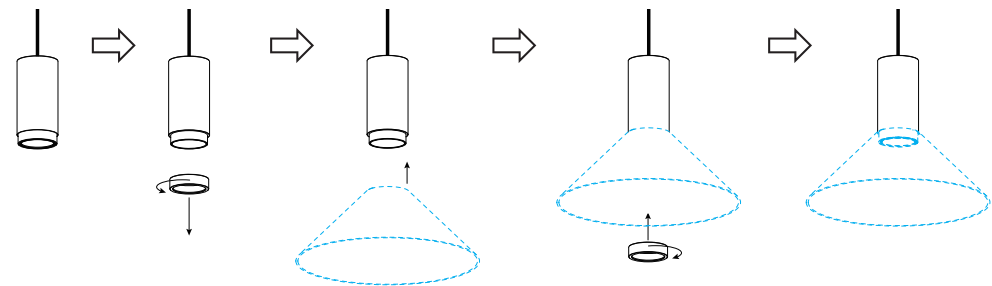
installation with shade 2.0



installation with shade 3.0 / 4.0 / 5.0 (always using the fixing tool)



installation with shade 6.0 / 7.0 / 8.0



About how to install with shade + inner cover, please find the page 4

ODREY on track (48V)

INSTALLATION INSTRUCTIONS | AUGUST 2020

installation with shade + inner cover

