

# REVER TABLE 2.0

01-Aug.-2017

## REVER TABLE 2.0

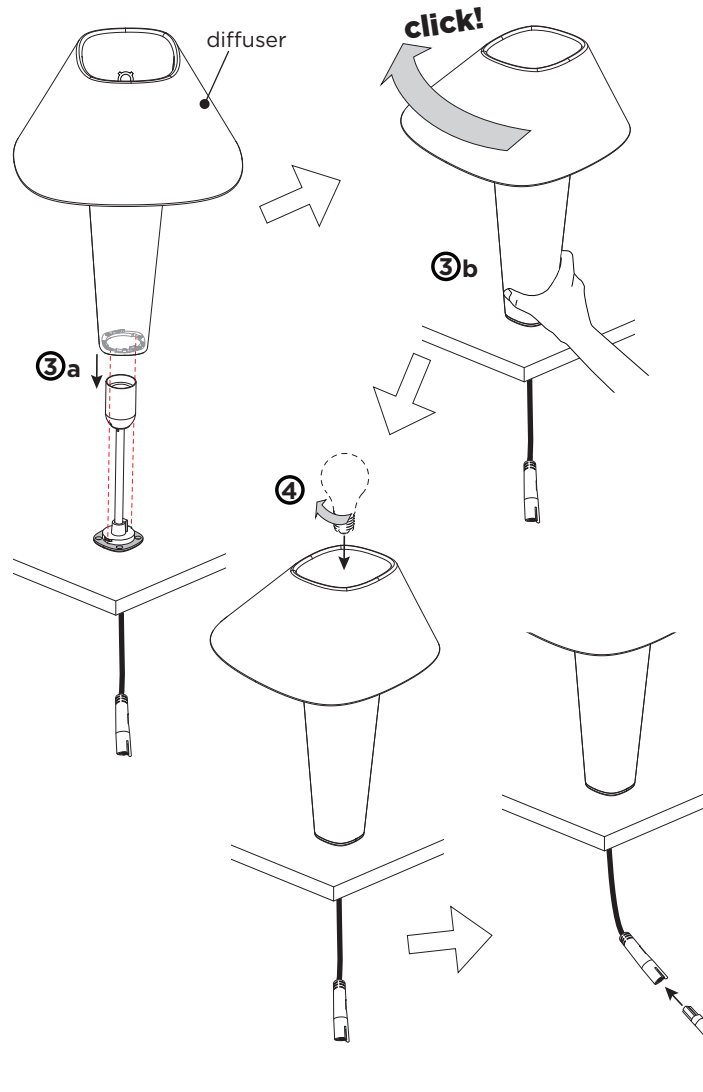
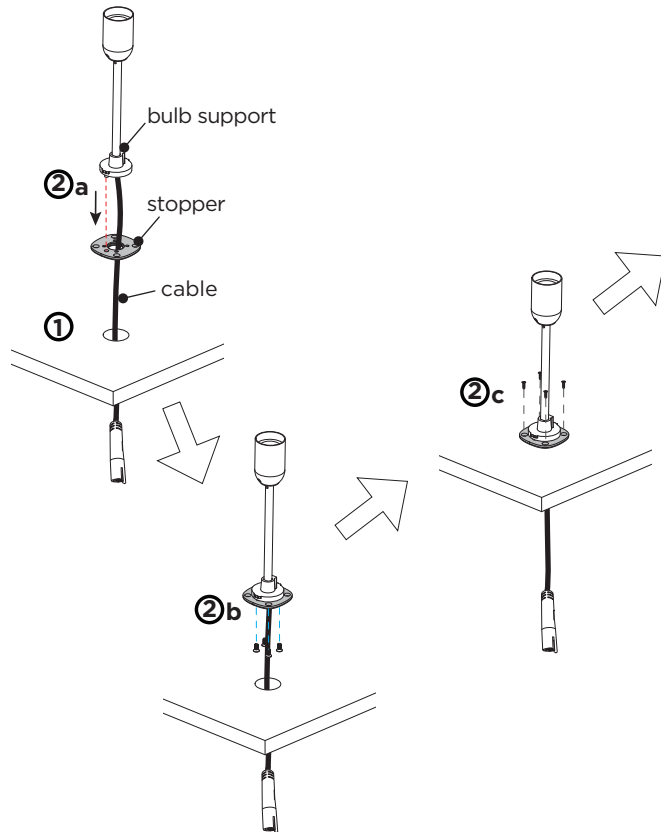
LED QA60 max. 12W | E27 | 220-240VAC | 50-60Hz | Dimmable  
| Black cable | Plating steel (C) | Polycarbonate (TG/SG/CW/AY/HR)

CE

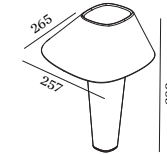
### DIFFUSER COLOUR

tea green  
smoke grey  
champ. white  
amber yellow  
hip rose

6502ETGC  
6502ESGC  
6502ECWC  
6502EAYC  
6502EHRC



## DIMENSIONS



Ø12mm

REVER TABLE 2.0

## MOUNTING INSTRUCTION

- ① Make a Ø12mm hole in the table.
- ② Assemble the bulb support & the stopper together, and then fix the stopper on the table. ( refer to steps: ②a, ②b & ②c )
- ③ Mount the diffuser.
  - a Use a diffuser to cover the bulb support.  
*Notice: Keep the grooves of the diffuser aligned with the projecting positions of the pole base.*
  - b Then hold the diffuser and clockwise rotating to click.
- ④ Fix a bulb into the diffuser, bulb is not included.  
Applies only to **LEADING EDGE LED DIMMABLE BULB.**
- ⑤ Connect the power with plugs.



WEVER & DUCRÉ  
LIGHTING

[www.weverducre.com](http://www.weverducre.com)

Wever & Ducre bvba Kwadestraat 153 bus 2.1 8800 Roeselare

INSTALLATION  
INSTRUCTIONS