

WIRO INDUSTRY

12-05-2016

1.0

QA60 max. 60W | E27 | 220-240VAC | 50-60Hz

CE IP20 960°C 0,9m

grey texture
black texture

2301E0T0
2301E0B0

for lamps see our catalogue

2.0

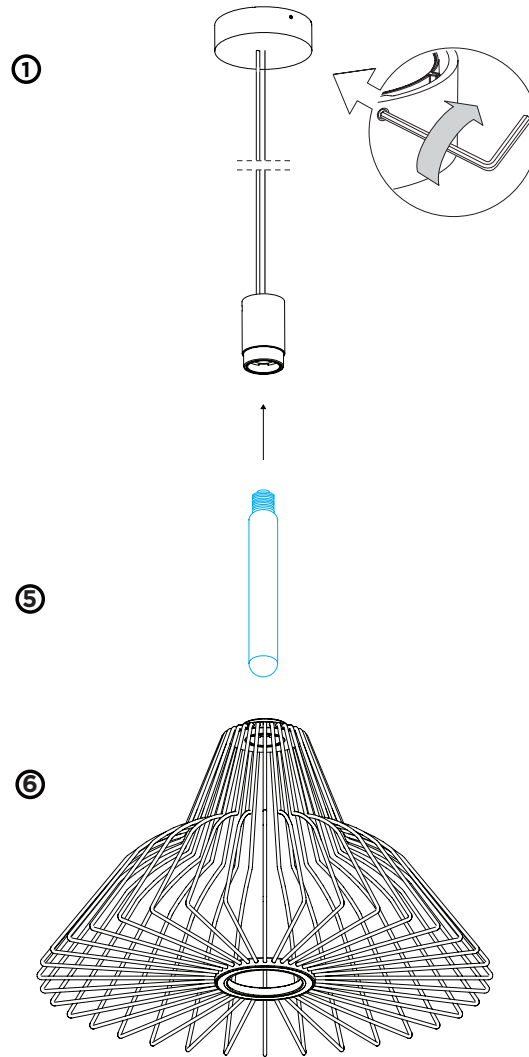
QA60 max. 60W | E27 | 220-240VAC | 50-60Hz

CE IP20 960°C 0,9m

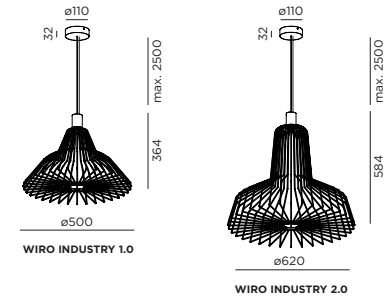
green texture
black texture

2302E0O0
2302E0B0

for lamps see our catalogue



DIMENSIONS

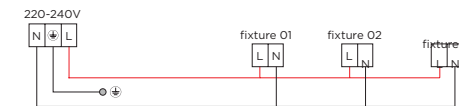


1 MOUNTING INSTRUCTION

Mount the ceiling base on the ceiling

2 POWER CONNECTION

PARALLEL CONNECTION



3 Secure strain relief

4 Adjust cable length

5 Insert lamp in the socket (lamp is not included)

6 Mount the fixture by screwing it on the socket.

For more detailed information see page 2.



WEVER & DUCRÉ
LIGHTING

www.weverducre.com

INSTALLATION
INSTRUCTIONS

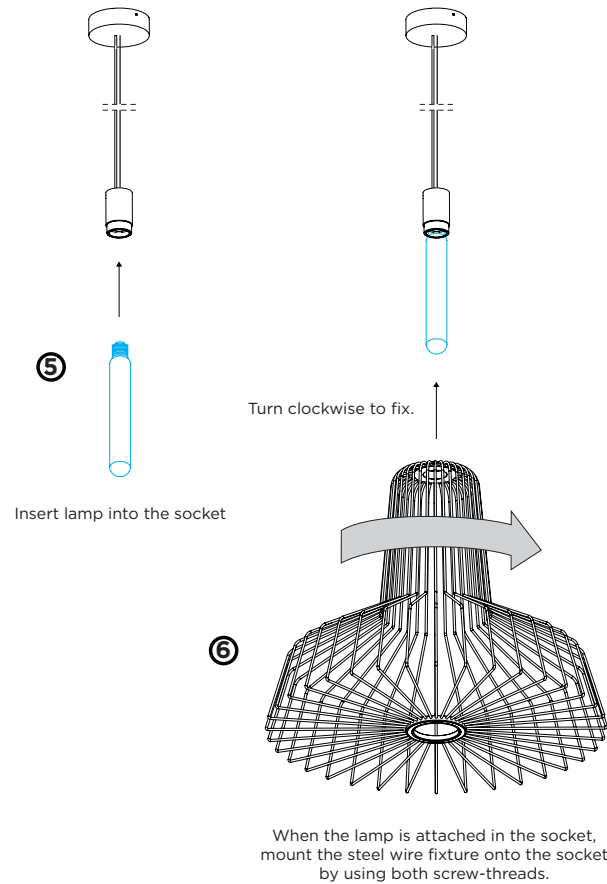
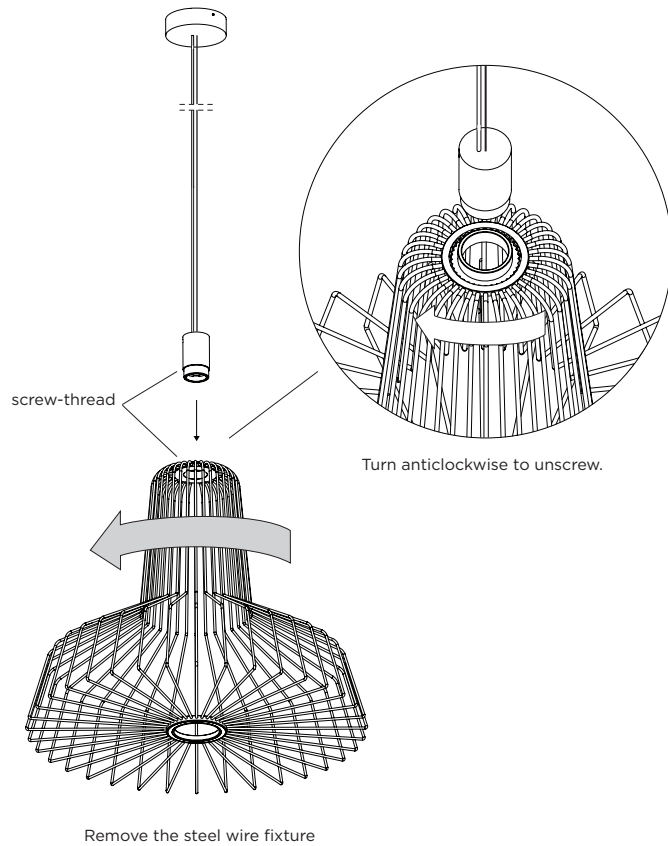
PAGE 1/2

WIRO INDUSTRY

DETAILED MOUNTING INSTRUCTION

12-05-2016

DETAILED MOUNTING INSTRUCTION.



- ⑤ Insert lamp in the socket (lamp is not included)
- ⑥ Mount the fixture by screwing it on the socket.

