

WIRO DIAMOND

12-05-2016

1.0

QA60 max. 60W | E27 | 220-240VAC | 50-60Hz

CE IP20 960°C 0,9m

copper
black texture

2291EOP0
2291EOB0

for lamps see our catalogue

2.0

QA60 max. 60W | E27 | 220-240VAC | 50-60Hz

CE IP20 960°C 0,9m

copper
black texture

2292EOP0
2292EOB0

for lamps see our catalogue

3.0

QA60 max. 60W | E27 | 220-240VAC | 50-60Hz

CE IP20 960°C 0,9m

copper
black texture

2293EOP0
2293EOB0

for lamps see our catalogue

4.0

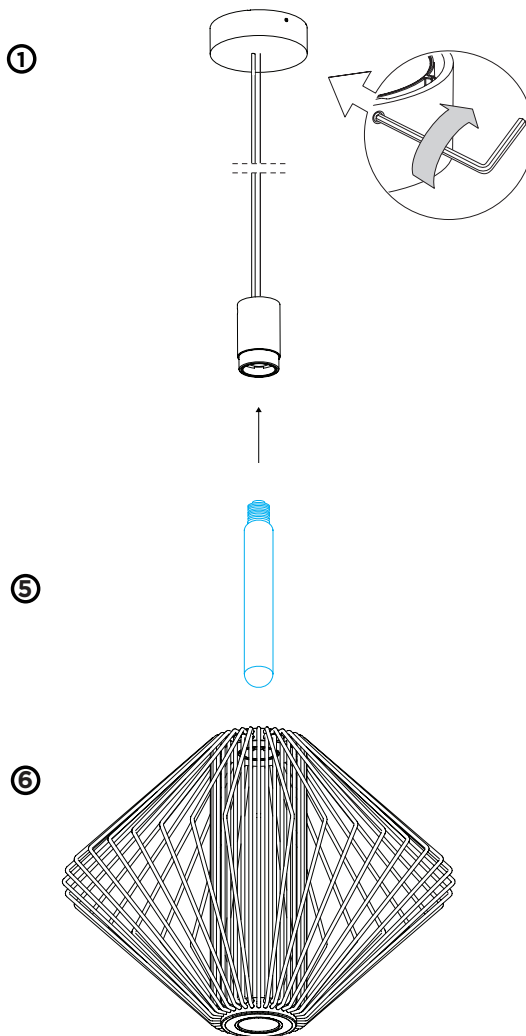
QA60 max. 60W | E27 | 220-240VAC | 50-60Hz

CE IP20 960°C 0,9m

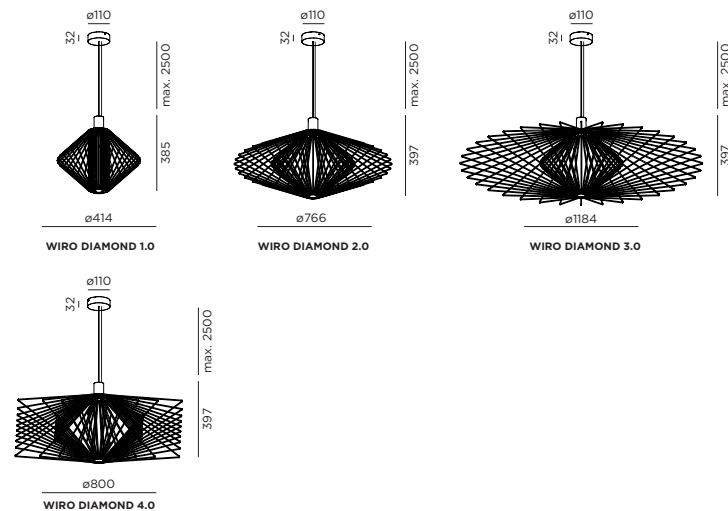
copper
black texture

2294EOP0
2294EOB0

for lamps see our catalogue



DIMENSIONS

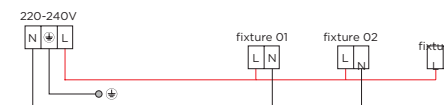


1 MOUNTING INSTRUCTION

Mount the ceiling base on the ceiling

2 POWER CONNECTION

PARALLEL CONNECTION



3 Secure strain relief

4 Adjust cable length

5 Insert lamp in the socket (lamp is not included)

6 Mount the fixture by screwing it on the socket.

For more detailed information see page 2.



WEVER & DUCRÉ
LIGHTING

www.weverducre.com

INSTALLATION
INSTRUCTIONS

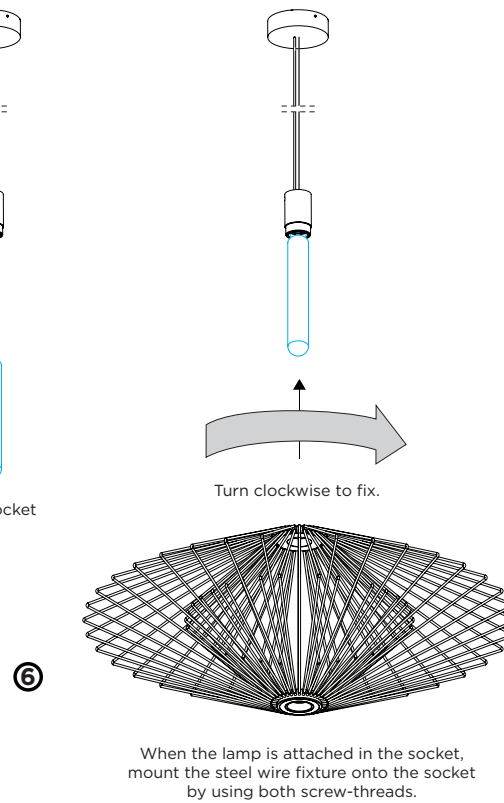
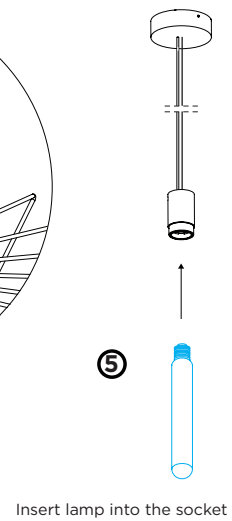
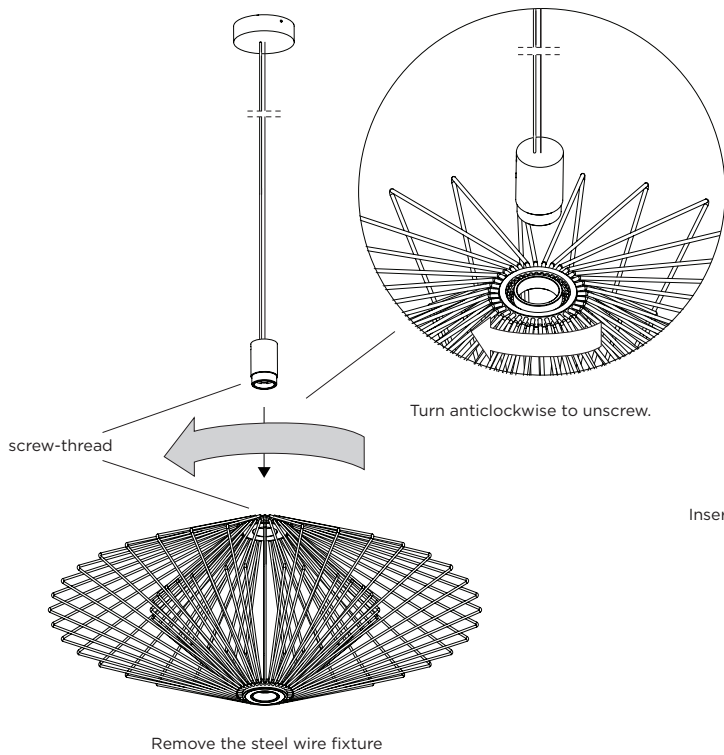
PAGE 1/2

WIRO DIAMOND

DETAILED MOUNTING INSTRUCTION

12-05-2016

DETAILED MOUNTING INSTRUCTION.



⑤ Insert lamp in the socket (lamp is not included)

⑥ Mount the fixture by screwing it on the socket.



WEVER & DUCRÉ
LIGHTING

www.weverducre.com

INSTALLATION
INSTRUCTIONS

PAGE 2/2