

ROOMOR CEILING 2.0

08-Oct.-2018

2.0 PAR16

max. 35W | GU10 | 100-240VAC | 50-60Hz
 CE IP20 45°/45°

BODY COLOUR

black texture

169120B...

2.0 E27

LED QA60 max. 12W | E27 | 220-240VAC | 50-60Hz
 CE IP20 45°/45°

BODY COLOUR

black texture

1691E0B...

OPTIONAL

Extension Tube

0.5 m 90019192
 1 m 90019191

No shade

00

SHADE 1.0

black texture B1
 black texture + gold K1
 felt grey (max. 15W) F1

SHADE 2.0

black texture B2
 black texture + gold K2
 felt grey (max. 15W) F2

SHADE 3.0

black texture B3
 black texture + gold K3
 felt grey (max. 15W) F3

SHADE 4.0

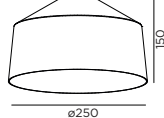
black texture B4
 black texture + gold K4
 felt grey (max. 15W) F4

for lamps see our catalogue

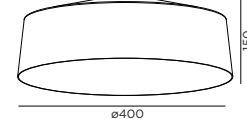
SHADE 1.0



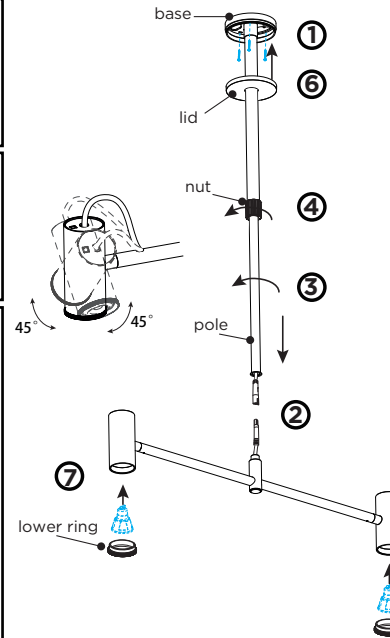
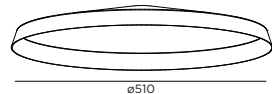
SHADE 2.0



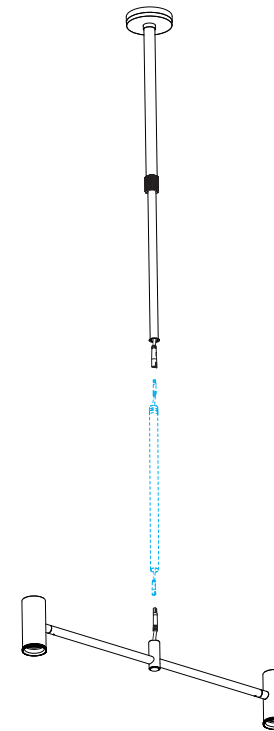
SHADE 3.0



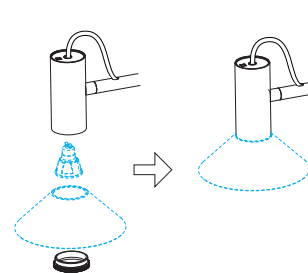
SHADE 4.0



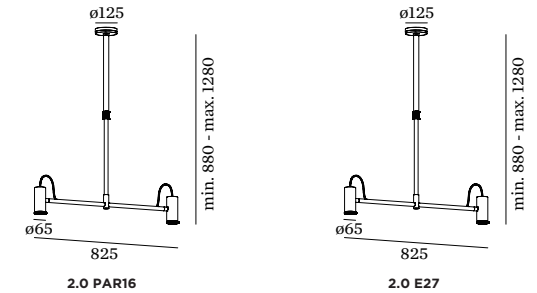
mount Extension Tube:



mount Shade:



DIMENSIONS



MOUNTING INSTRUCTION

- Open the lid, and mount the base on the ceiling with screws.
 - Connect the cable plugs;
 - Connect the pole to the luminaire body by rotation.
 - Adjust the pole to the desired length and tighten the nut.
 - POWER CONNECTION**
Connect the power
-
- Hide the excess cable inside the ceiling base and close the lid of ceiling base by pressing.
 - Unscrew the lower ring of the luminaire body, install a bulb (bulb is not included), and then screw the lower ring back.

PB19-010-598-00



WEVER & DUCRÉ
LIGHTING

www.weverducre.com

Wever & Ducre bvba Spinnerijstraat 99/21 8500 Kortrijk

INSTALLATION
INSTRUCTIONS