

CYCLONE

28/11/2017

17.0 LED

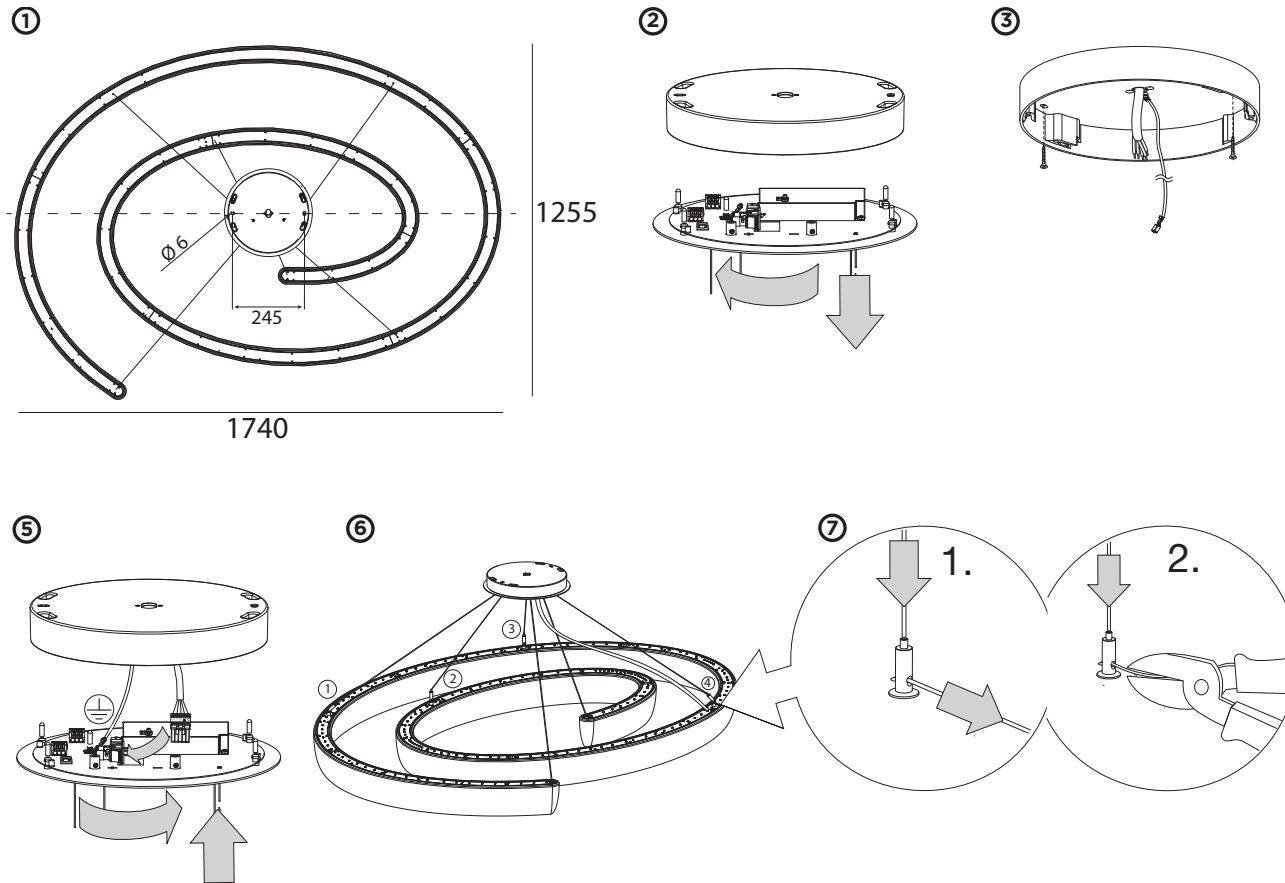
LED 70W | 220-240VAC | PCB 3-step | DALI dim | aluminium powder coated | opal LLDPE body

CE IP20 0.3m P

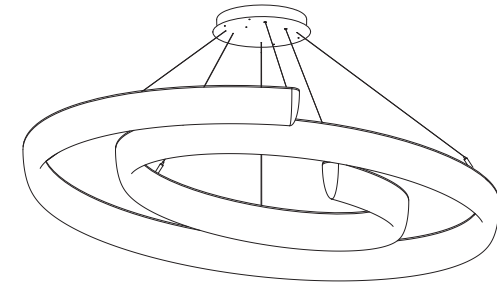
3000K | >80CRI | 7000lm

white texture

219185W4



DIMENSIONS



MOUNTING SYTUATION

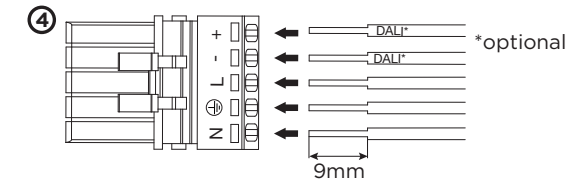
① Mounting Sytuation from top view

Open the Baldachin

② Open the Baldachin

③ Mount the housing with two screws (12Kg)
Attention ! observe the direction!

Install supply plug



Plug the cables

⑤ plug the grounding cable (⊕) and plug the supply plug and close the baldachin.

Correct position of the ropes

⑥ Correct position of the ropes of the Luminaire.

⑦ cut ropes
ropes may not have contact with the sheet metal.

⑧ Only turn on the light after completing the mounting.



WEVER & DUCRÉ
LIGHTING

www.weverducre.com

INSTALLATION
INSTRUCTIONS