

# SMILE IN

08-Aug.-2016

## 1.0

**LED** 4/6W | 350-500mA | 9Vf | COB 2-step | excl. power supply

CE IP20 0.3m E A B

3000K | >80CRI | 280-370lm

white texture  
aluminium brushed

326151W4  
702151L4

## 1.0

**LED** 4/6W | 350-500mA | 9Vf | COB 2-step | excl. power supply

CE IP65 0.3m E A B

3000K | >80CRI | 280-370lm

dark grey texture (only for exterior use)  
white texture

702151D4  
702151W4

## 2.0

**LED** 4/6W | 350-500mA | 9Vf | COB 2-step | excl. power supply

CE IP20 0.3m E A B

3000K | >80CRI | 280-370lm

white texture  
aluminium brushed

326251W4  
703151L4

## 2.0

**LED** 4/6W | 350-500mA | 9Vf | COB 2-step | excl. power supply

CE IP65 0.3m E A B

3000K | >80CRI | 280-370lm

dark grey texture (only for exterior use)  
white texture

703151D4  
703151W4

### ALWAYS USE

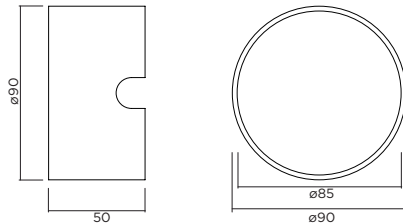
for power supplies see our catalogue

### OPTIONAL

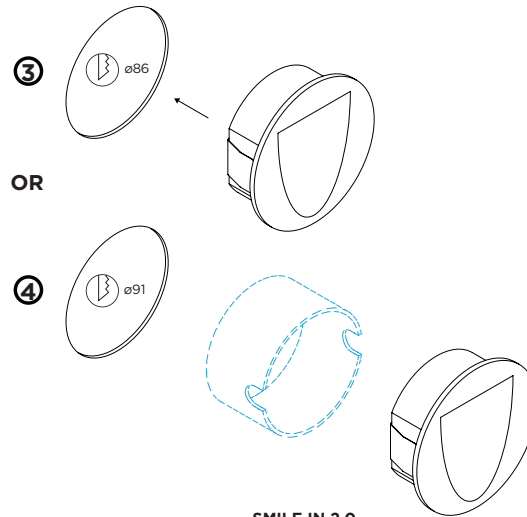
recessed housing

90012030

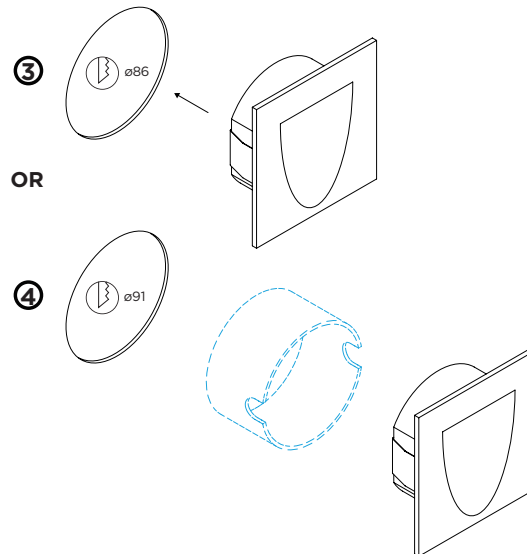
OPTIONAL, (ORDER SEPARATELY)  
recessed housing dimensions



### SMILE IN 1.0



### SMILE IN 2.0



### DIMENSIONS



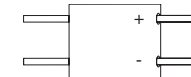
### MOUNTING INSTRUCTION

- 1 Make a hole in the ceiling according to the prescribed dimensions.

### POWER CONNECTION

- 2 Use connector or cut wires to connect to power supply

Interior: STANDARD version



Exterior: WATERPROOF Connection



- 3 Insert the fixture in the hole.

OR

- 4 Insert the fixture in the hole, by using a recessed housing

