

# X-BEAM

07-Aug-2018

## 1.0

LED 18W | 220-240VAC | 50-60Hz | COB 3-step | incl. PS | phase-cut dim  
 CE IP65 0,3m 120° 9x 0/110°

3000K | >80CRI | 1040lm  
 dark grey texture

700364D4

### ACCESSORIES

snoot 90019023  
 groundspike 90013115

## 2.0

LED 16W | 220-240VAC | 50-60Hz | COB 3-step | incl. PS | phase-cut dim  
 CE IP65 0,3m 9x 120° 9x 0/110°

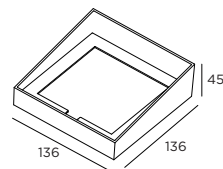
3000K | >80CRI | 895lm  
 dark grey texture

700354D4

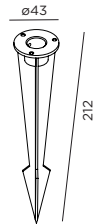
### ACCESSORIES

snoot 90019023  
 groundspike 90013115

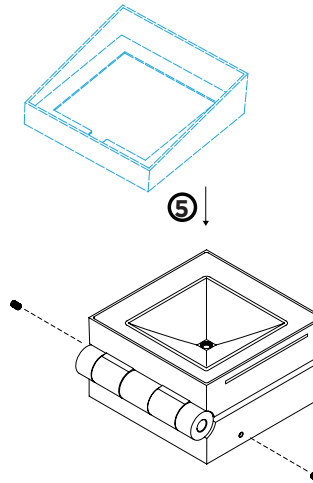
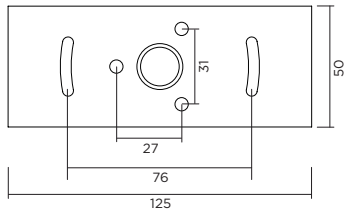
snoot dimensions - optional



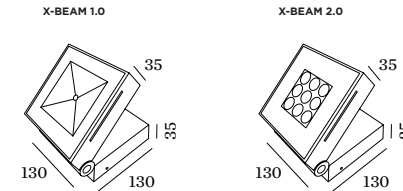
groundspike dimensions - optional



base plate dimensions



## DIMENSIONS

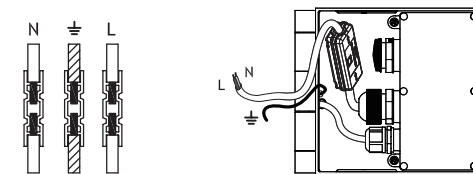


## MOUNTING INSTRUCTION

- ① Remove the base plate
- ② Fixate the base plate to the ground with screws  
 OPTIONAL  
 Fixate the base plate to the groundspike with screws

## POWER CONNECTION

- ③ Connect the wires with waterproof connections in the space in the bottom of the fixture



bottom view

- ④ Fixate the base fixture to the base plate with side screws
- ⑤ OPTIONAL  
 Click the snoot on the X-BEAM



**WEVER & DUCRÉ**  
 LIGHTING

[www.weverducre.com](http://www.weverducre.com)

Wever & Ducre bvba Spinnerijstraat 99/21 8500 Kortrijk

**INSTALLATION  
 INSTRUCTIONS**

PAGE 1/2

# X-BEAM

07-Aug-2018

## 1.0

LED 18W | 220-240VAC | 50-60Hz | COB 3-step | incl. PS | phase-cut dim

CE IP65 0,3m 120° 9x 0/110°

3000K | >80CRI | 1040lm

dark grey texture

700364D4

### ACCESSORIES

snoot

90019023

## 2.0

LED 16W | 220-240VAC | 50-60Hz | COB 3-step | incl. PS | phase-cut dim

CE IP65 0,3m 9x 120° 0/110°

3000K | >80CRI | 895lm

dark grey texture

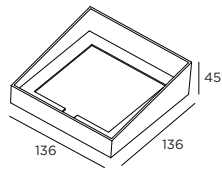
700354D4

### ACCESSORIES

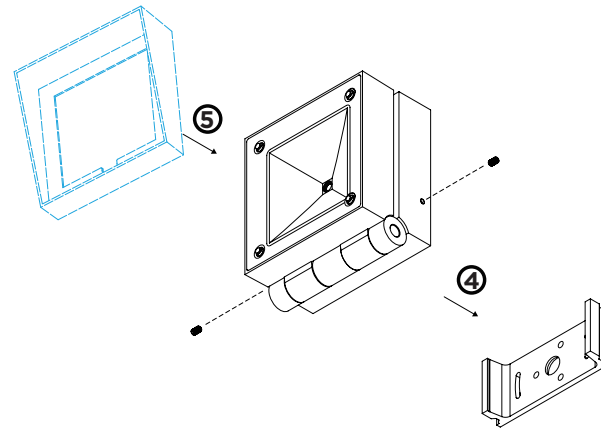
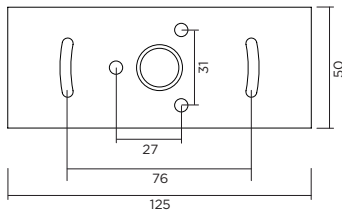
snoot

90019023

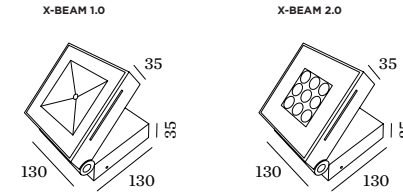
snoot dimensions - optional



base plate dimensions



## DIMENSIONS

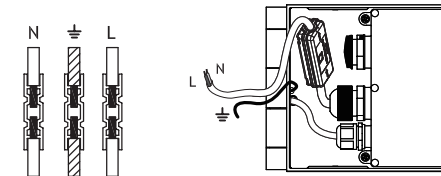


## MOUNTING INSTRUCTION

- 1 Remove the base plate
- 2 Fixate the base plate to the wall with screws

## POWER CONNECTION

- 3 Connect the wires with waterproof connections in the space in the bottom of the fixture



bottom view

- 4 Fixate the base fixture to the base plate with side screws
- 5 OPTIONAL  
Click the snoot on the X-BEAM