

STIPO

26-Jun.-2018

1.0

LED 7W | 220-240VAC | 50-60Hz | COB 3-step | incl. PS

CE IP65 \odot \square \triangle ∇ 0,3m \curvearrowright 135°

3000K | >80 CRI | 460lm | 2m cable

dark grey texture
dark brown texture

737157D4
737157Y4

2.0

LED 7W | 220-240VAC | 50-60Hz | COB 3-step | incl. PS

CE IP65 \odot \square \triangle 0,3m \curvearrowright 135°

3000K | >80 CRI | 460lm | 2m cable

dark grey texture
dark brown texture

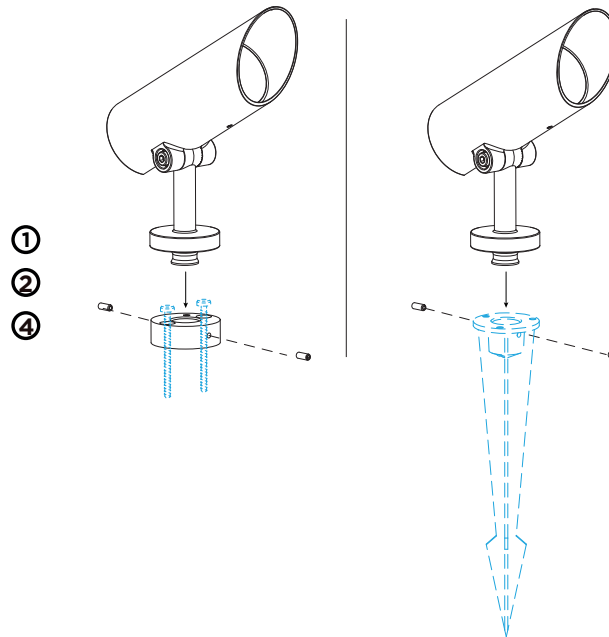
737267D4
737267Y4

OPTIONAL
groundspike

90013106

Fix to the base plate

Fix to the groundspike



DIMENSIONS



STIPO 1.0



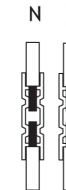
STIPO 2.0

MOUNTING INSTRUCTION

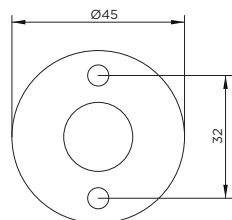
- ① Remove the base plate
- ② Fixate the base plate to the ground with screws
OPTIONAL
Fixate the base plate to the groundspike with screws

POWER CONNECTION

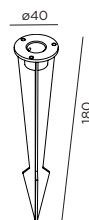
- ③ Connect the wires with waterproof connections



base plate dimensions



groundspike dimensions



- ④ Fixate the luminaire to base plate or the groundspike with side screws

- ⑤ ∇ 85 The product has an auto-recovery thermal fuse. In order to avoid product early failure in some extreme condition; If the internal components reach a temperature of 85°C, the product will switch off and then restart when cooling down.



WEVER & DUCRÉ
LIGHTING

www.weverducre.com

Wever & Ducré bvba Spinnerijstraat 99/21 8500 Kortrijk

INSTALLATION
INSTRUCTIONS

PAGE 1/2

