

# GETTON

02-11-2015

## 1.0

**LED** 8W | 220-240VAC | 50-60Hz | PCB 3-step | incl. PS | phase-cut dim

CE  $\oplus$  IP65  $\square$  960° C  $\downarrow$  0,3m  $\oplus$   $\square$

3000K | >80CRI | 665lm | opal glass  
 dark grey texture

717574D4

### ALWAYS USE

base 400 910052D0  
 base 600 910054D0  
 base 800 910058D0

### OPTIONAL

groundspike 90013101

## 2.0

**LED** 8W | 220-240VAC | 50-60Hz | PCB 3-step | incl. PS | phase-cut dim

CE  $\oplus$  IP65  $\square$  960° C  $\downarrow$  0,3m  $\oplus$   $\square$

3000K | >80CRI | 665lm | clear glass  
 dark grey texture

717674D4

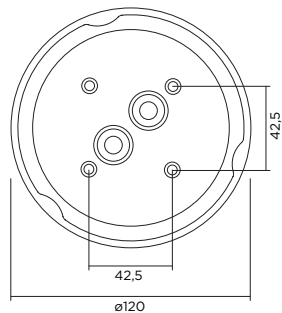
### ALWAYS USE

base 400 910052D0  
 base 600 910054D0  
 base 800 910058D0

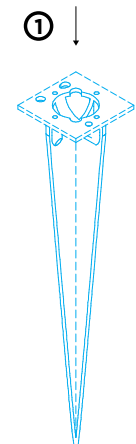
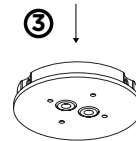
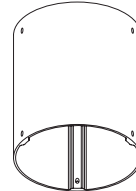
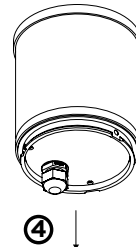
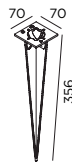
### OPTIONAL

groundspike 90013101

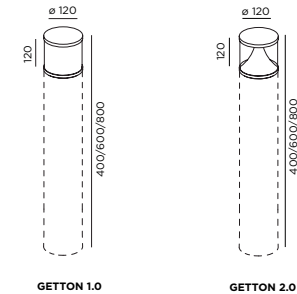
base plate dimensions



OPTIONAL, (ORDER SEPARATELY)  
 groundspike dimensions



## DIMENSIONS

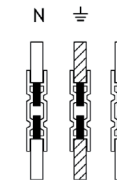


## MOUNTING INSTRUCTION

- 1 Attach the base plate to the ground with screws  
 OPTIONAL: fixate the base plate to the ground spike with screws

## POWER CONNECTION

- 2 Exterior: WATERPROOF Connection



- 3 Fixate the base on the base plate
- 4 Fix the GETTON head on the base



WEVER & DUCRÉ  
 LIGHTING

www.weverducre.com

INSTALLATION  
 INSTRUCTIONS