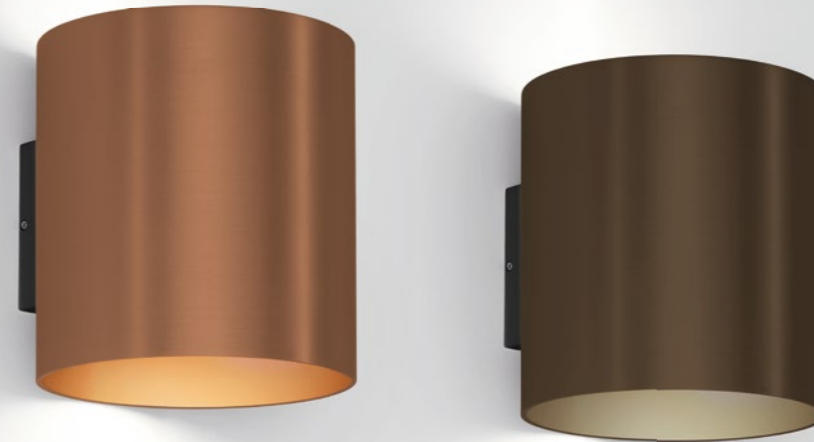




RAY

WALL SURFACE



3.0 LED

2x LED 3W | 220-240VAC | 50-60Hz
 PCB 3-step | phase-cut dim
 aluminium powder coated
 brushed | incl. flaps for adjustable
 beam angle

0,85kg IP20 0-3°

CODE	
	332248W_
	332248L_
	332248G_
	332248Q_
	332248P_
	332248B_

LIGHT COLOUR	LUMEN	CRI	CODE
2700K	2x200	>80	2
3000K	2x220	>80	4
1800-2850K	2x200	>80	9