

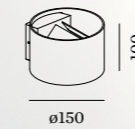
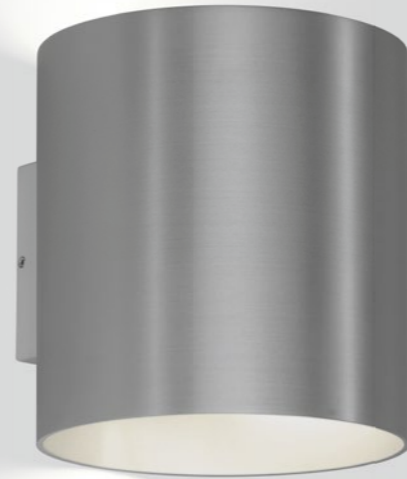


RAY

OUTDOOR WALL SURFACE



p. 267 p. 367 p. 401 p. 497 p. 575
p. 377



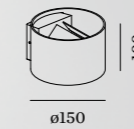
1.0

LED 6W | 220-240VAC | 50-60Hz
PCB 3-step | phase-cut dim
aluminium powder coated
incl. flaps for adjustable beam angle

0.47kg IP65

CODE
741168W_
741168D_
741168B_

LIGHT COLOUR	LUMEN	CRI	CODE
2700K	400	>80	2
3000K	440	>80	4



2.0

2x LED 3W | 220-240VAC | 50-60Hz
PCB 3-step | phase-cut dim
aluminium powder coated
incl. flaps for adjustable beam angle

0.47kg IP65

CODE
741148W_
741148D_
741148B_

LIGHT COLOUR	LUMEN	CRI	CODE
2700K	2x200	>80	2
3000K	2x220	>80	4



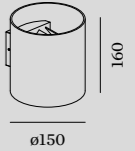
3.0

LED 6W | 220-240VAC | 50-60Hz
PCB 3-step | phase-cut dim
aluminium powder coated
incl. flaps for adjustable beam angle

0.53kg IP65

CODE
741268W_
741268D_
741268B_

LIGHT COLOUR	LUMEN	CRI	CODE
2700K	400	>80	2
3000K	440	>80	4



4.0

2x LED 3W | 220-240VAC | 50-60Hz
PCB 3-step | phase-cut dim
aluminium powder coated
incl. flaps for adjustable beam angle

0.53kg IP65

CODE
741248W_
741248D_
741248B_

LIGHT COLOUR	LUMEN	CRI	CODE
2700K	2x200	>80	2
3000K	2x220	>80	4